

MULTIPLEX

Newsletter

October 2024

Holborn Viaduct | Issue No.2

Headlines in brief

- Introduction
- Site updates
- Look ahead
- Community update
- Environmental update



Introduction

Multiplex Construction is a premier global construction company that has been shaping skylines and delivering iconic projects for over 55 years. We have been appointed to manage the construction of Holborn Viaduct.

We will be working in partnership with Royal London Asset Management. Royal London are a key player in the UK commercial property investment market. They aim to uphold the aims of sustainable development: To enhance the economic, social, and environmental benefits.

Constructing a better future

The new scheme will offer future-proof, flexible working space that will support sustainability benefits and significant improvements to the surrounding public realm. The new thirteen story building will deliver a sustainable, adaptable, and healthy new workplace environment; including biodiverse green terraces to promote outdoor working.

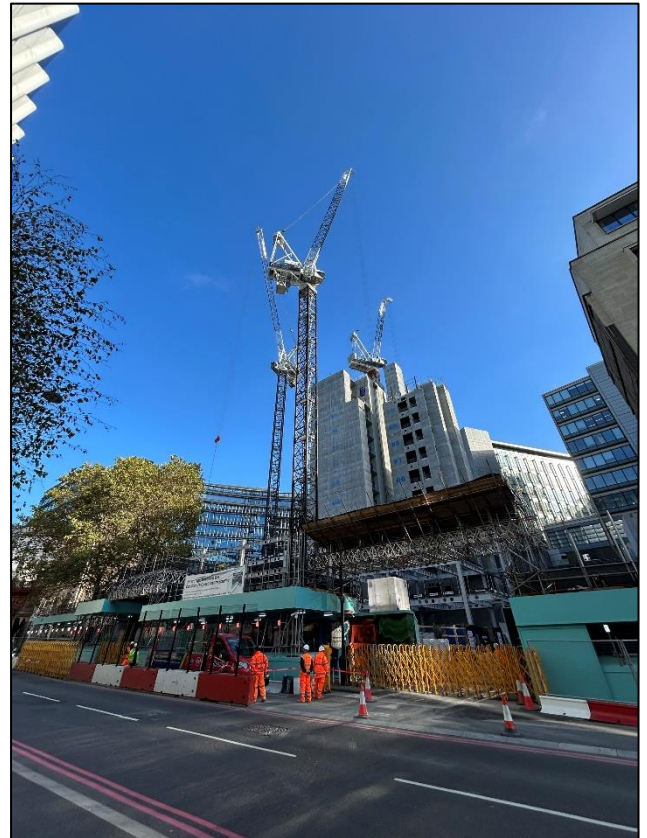
Site Progress

- Works are progressing well on site. Having taken on the role as main contractor earlier in September.
- The steel frame is being erected with our specialist partner BHC and is currently at level 3.
- Concrete slabs are being poured and currently at level 2.
- Our groundworks contractor Erith are mobilising off site.
- Blockwork is beginning in the basement.
- The project is utilising 3 tower-cranes, and these have all been installed.
- The hoist is due to be installed in November and will be important to progress on site.
- We have a full gantry system in place for deliveries on Farringdon Street.
- This allows for the cycle lane to be fully operational for the public.
- We will be commencing tree pruning work on Saturday to ensure maintenance of protected tree on Farringdon Street.
- In Newcastle Close, utility diversions and repaving are complete.



November Look Ahead

- Looking ahead to November we will see the continued progression of the project with the steel being erected at pace.
- Concrete slabs will continue to be poured.
- The erection of steel will be commencing in the Wellness Block.



Community Update

- We held our first community liaison meeting on 24th September 2024.
- We discussed the project, site updates, the team and our community impact goals.
- We were delighted to hold our first major charity event for our partner charity Depaul. Through our charity golf day, we raised £18,000 with the support of our supply chain.
- We also supported Depaul with some maintenance work at a property they use to house young people who have previously been homeless.
- Throughout the summer months we welcomed 4 students onto site for work placements. We received very positive feedback about their experience, and we will continue to provide opportunities for work experience and education.
- The site welcomed the Considerate Constructors Scheme (CCS) for an initial advisory visit ahead of the regular site audits that will take place.
- We continue to work closely with the City of London, ensuring that any overruns or out of hours work are confirmed, and local stakeholders are notified.



Environmental Update

- Pouring of high GGBS low-carbon concrete began this month, which has a significant carbon saving compared to traditional cement.
- All plant used in the construction of the steel decks being erected at the moment are electric or biofuel powered to meet Multiplex's ambitious 2025 targets.
- Multiplex hosted a CCS advisory visit where we were able to share all the good practice implemented on site to achieve a low carbon build, including carbon reporting in line with GLA guidance & implementation of a material passport.

Key Contacts

24/7 Emergency phone line:
Holborn Viaduct Security
07825913595



Patrick Brooker
Multiplex
Social Value Graduate
Patrick.brooker@multiplex.global



Richard Walker
Multiplex
Construction Lead
Richard.walker@multiplex.global



Lucy Mortimer
JBP
Account Manager
Lucy.Mortimer@jbp.co.uk

Site Working Hours

Our standard site working hours, agreed with the City of London, are below:

8am – 6pm: Monday to Friday

9am – 2pm: Saturday

Quiet working hours:

10am – 12pm: Monday to Friday

2pm – 4pm: Monday to Friday

There is expected to be times where extended working hours are necessary and in such instances, advance approval is sought from the City of London.

